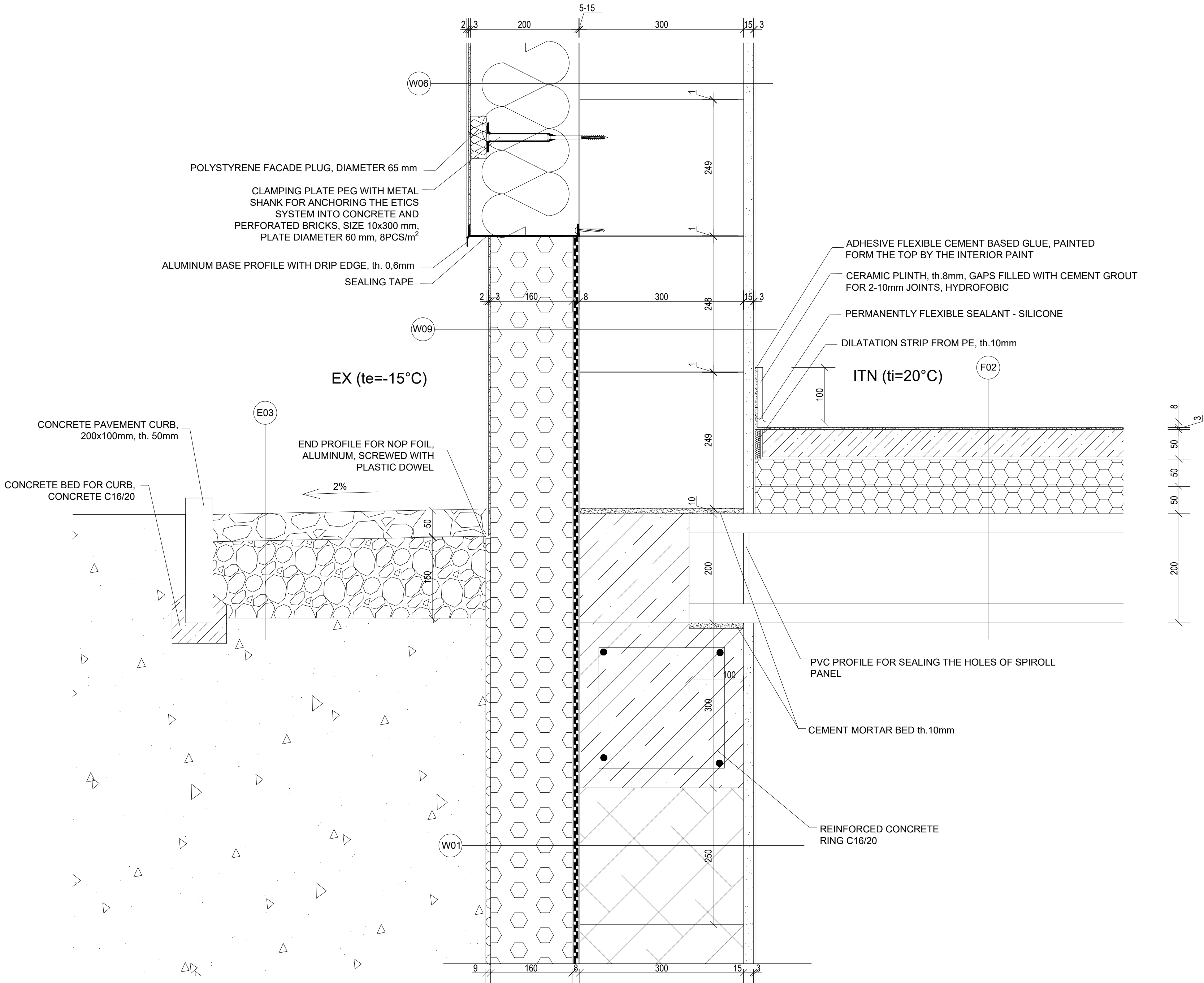


DETAIL D - PLINTH



LEGEND OF MATERIALS:

- LOAD-BEARING FORMWORK BLOCKS BTB 50/30/25 (P+D), LxWxH 500x300x250mm, FILLED WITH REINFORCED CONCRETE C20/25, STEEL B500B DESIGNED ACCORDING TO STRUCTURAL DESIGN (NOT PART OF THIS PD), REI 180 DP1
- LOAD-BEARING WALL FROM CERAMIC BLOCKS POROTHERM 30 PROFI, th. 300mm, LxWxH 247x300x249mm, LAID ON THIN MORTAR JOINT, R_w=48dB, REI 180 DP1
- FACADE THERMAL INSULATION FROM MINERAL WOOL, th.200mm, STRENGTH 30 kPa, λ_D=0,034 W/mK
- BOARD FROM GREY EPS 150, λ_D=0,032 W/mK, th. 2x50mm
- PLASTERS, ADHESIVE COMPOUNDS, DIFFERENT TYPES AND THICKNESSES, FOR EXACT SPECIFICATION SEE COMPOSITIONS
- AGGREGATE - GRAVEL
- EXCAVATED SOIL
- THERMAL INSULATION FROM EXTRUDED POLYSTYRENE, XPS 300 L, th. 160mm, STRENGTH 300 kPa, λ_D=0,033 W/mK
- REINFORCED CONCRETE, C25/30, STEEL B50B
- WATERPROOFING - 2 x SBS MODIFIED ASPHALT FELT, th. 8mm
- PLAIN CONCRETE C20/25

COMPOSITIONS

W01

i

e

SURFACE FINISH - SILICATE INTERIOR PAINT, 2-3 LAYERS

PENETRATION LAYER - PRIMER FOR SILICATE PLASTERS

SURFACE LAYER - FINISHING PLASTER - INTERNAL STUCCO PLASTER

BASE LAYER - CORE PLASTER - INTERNAL LIME-CEMENT PLASTER

LOAD-BEARING LAYER - FORMWORK BLOCKS BTB 50/30/25 (P+D)

PENETRATION LAYER - ASPHALT EMULSION

WATERPROOFING - SBS MODIFIED ASPHALT FELT WITH GLASS FIBRE

WATERPROOFING - SBS MODIFIED ASPHALT FELT WITH POLYESTER MAT

WATERPROOFING - ASPHALT ADHESIVE WATERPROOFING COMPOUND

THERMAL INSULATION - EXTRUDED POLYSTYRENE, XPS 300 L

PROTECTIVE LAYER - NOP FOIL FROM HDPE

(0,30kg/m2)

(0,25kg/m2)

3mm

15mm

300mm

(0,4l/m2)

4mm

4mm

3mm

160mm

9mm

W06

i

e

SURFACE FINISH - SILICATE INTERIOR PAINT, 2-3 LAYERS

PENETRATION LAYER - PRIMER FOR SILICATE PLASTERS

SURFACE LAYER - FINISHING PLASTER - INTERNAL STUCCO PLASTER

BASE LAYER - CORE PLASTER - INTERNAL LIME-CEMENT PLASTER

LOAD-BEARING LAYER - BLOCKS POROTHERM 30 PROFI

PENETRATION PRIMER

ADHESIVE LAYER - MORTAR - APPLIED DIRECTLY ON EPS BLOCKS

THERMAL INSULATION - MINERAL WOOL - MECHANICALLY ANCHORED

LEVELING LAYER - MORTAR REINFORCED WITH GLASS FIBRE MESH

PENETRATION PRIMER

FINISHING LAYER - THIN-LAYERED PASTY FACADE PLASTER

(0,30kg/m2)

(0,25kg/m2)

3mm

15mm

300mm

(0,25kg/m2)

5-15mm

200mm

3mm

(0,25kg/m2)

2 mm

E03

i

e

DRAINAGE LAYER - DARK DECORATIVE GRAVEL, FRACTIONS 16-32 mm

BASE LAYER - GARVEL, FRACTION 8-16mm

SEPARATION LAYER - GEOTEXTILE

50mm

150mm

300g/m2

W09

i

e

SURFACE FINISH - SILICATE INTERIOR PAINT, 2-3 LAYERS

PENETRATION LAYER - PRIMER FOR SILICATE PLASTERS

SURFACE LAYER - FINISHING PLASTER - INTERNAL STUCCO PLASTER

BASE LAYER - CORE PLASTER - INTERNAL LIME-CEMENT PLASTER

LOAD-BEARING LAYER - FORMWORK BLOCKS BTB 50/30/25 (P+D)

PENETRATION LAYER - ASPHALT EMULSION

WATERPROOFING - SBS MODIFIED ASPHALT FELT WITH GLASS FIBRE

WATERPROOFING - SBS MODIFIED ASPHALT FELT WOTH POLYESTER MAT

WATERPROOFING - ASPHALT ADHESIVE WATERPROOFING COMPOUND

THERMAL INSULATION - EXTRUDED POLYSTYRENE, XPS 300 L

LEVELING LAYER - MORTAR REINFORCED WITH GLASS FIBRE MESH

PENETRATION PRIMER

FINISHING LAYER - MOSAIC PLASTER FOR PLINTH - MARMOLIT

(0,30kg/m2)

(0,25kg/m2)

3mm

15mm

300mm

(0,4l/m2)

4mm

4mm

3mm

160mm

3mm

(0,4 kg/m2)

2 mm

F02

i

e

SURFACE LAYER - CERAMIC TILES 600x600mm, ANTISLIP SURFACE R10/B

GROUTING LAYER - CEMENT GROUT FOR 2-10mm JOINTS, HYDROFOBIC

ADHESIVE LAYER - FLEXIBLE CEMENT BASED GLUE

PENETRATION LAYER - CEMENT BASED PRIMER

LEVELING LAYER - SELF-LEVELING CEMENT SCREED

SEPARATION LAYER - PE FOIL

THERMAL & ACOUSTIC INSULATION - BOARD FROM GREY EPS, 2x50m

LOADBEARING LAYER - SPIROLL PANEL

8mm

0,3kg/m2

2-3mm

0,15kg/m2

50mm

0,185kg/m2

100mm

200mm

TOTAL FLOORING THICKNESS:

160mm

0,000 =240,24

m.a.s.l., B.H.S. / COORDINATE SYSTEM S-JTSK

COURSE	DIPLOMA THESIS	<div><div>T</div><div>FAKULTA</div><div>STAVEBNÍ</div><div>ústav</div><div>pozemního stavitelství</div></div>	
DRAWN BY	BARBORA HUSÁROVÁ		
SUPERVISED BY	ING. JAN MÜLLER PH.D.		
INVESTOR			
LOCATION	POŘÁDÍ, 687 51 NIVNICE, PARCELS No. 65, 64, 63, 61, 57		
PROJECT TITLE	MUNICIPAL CENTRE IN NIVNICE		
BUILDING OBJECT	BO 01 MUNICIPAL CENTRE	PAPER FORMAT	630x594
PART	D.1.1 ARCHITECTURAL BUILDING SOLUTION	DATE	01/2025
DRAWING TITLE:	DETAIL D - PLINTH	PROJ. PHASE	DPS
		SCALE	1:5
		DRAWING NO.	D.1.1.13